

TimeTech Queue Management System Features

- Kiosk works as a System Server and all the application installed in it
- Less single point of failures
- In RF communication option, system works with minimum number of wires and network equipment's
- Ethernet Network available for access the report remotely from the admin PC
- Another Option is available using physical network (Ethernet cabling required)
- Sleek Kiosk Design built-in 17" Portrait high quality touch screen
- Thermal printer compact size with high space for the thermal roll
- Audio amplifier Built inside the Kiosk Machine can deliver the voice to the built-in speakers, or can be connected to external speaker (i.e. ceiling speakers ... etc.)
- RF Communication to communicate the CDU's, SDU's and the calling pads
- Windows Based Operating System
- SQL database
- Media player to be connected to LCD to Display the Status of the Queue and can play the video with Ticker
- Calling Keypad can be soft keypad to be installed on the user PC or hard keypad (Wired and Wireless)
- Reporting application

1. System Components

1.1. Touch Screen KIOSK (Built-In System Server):

- Multimedia Display:
 - Shows stunning graphics
 - True multi-lingual pages
 - Handles over up to 15 categories
- Specifications:
 - 17" Touch Screen
 - Multi-Lingual ticket printing
 - Robust brushed steel body
 - Thermal Printer
 - Samsung LCD Display
 - 80mm Thermal Printer, with Auto cutter
 - Computer control system
 - LAN / Network cable (*for media player to Monitor display*)
 - Support 1-14 services (categories)
 - Wire or Wireless
 - All in one kiosk, controllers etc.
 - Multi – Language
 - Size: 38(L)*45(W)*128 (D)cm
 - Amplifier Built-in speakers (Kiosk) for announcement



1.2. Counter Terminal

- Terminal Call-pad Hard - **Wireless**
- Calling, optional call, transfer, waiting Person check, recall, etc.
- 19 function key, 6 bit LCD display,
- Size: 15(L)*9(w)*2.5(D) cm



1.3. Counter Display

- Counter LED Display (Wireless)
- Counter LED Display 8 Digits bright light tube LED
- Display: 4 digits counter No.
- F3.75 LED display
- Size: 35.4(L)*12.6(W)*5(D)cm



1.4. Main LED Display

- Four Lines LED Status display

1.5. Media Player

- Computer base inside
- Windows xp/2000
- Control the LCD plasma
- Size: 36.8(L)*16(W)*3(D)cm



1.6. TimeTech-Q –Reporting offers:

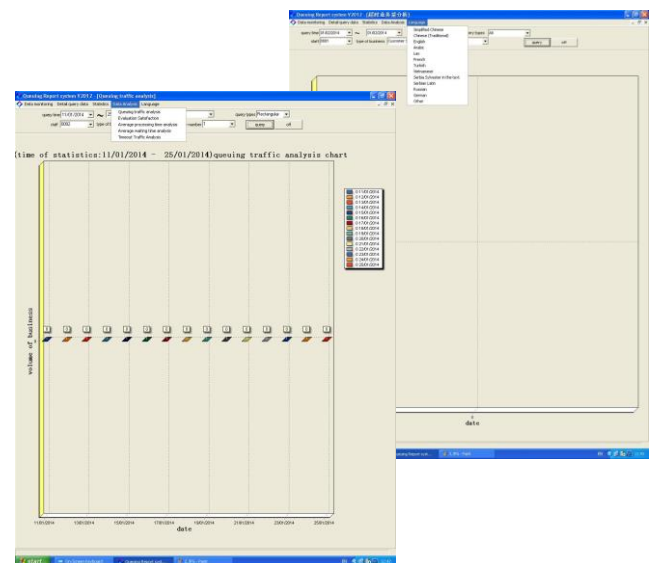
- Statistic Multimedia Display:
- Queue Statistic
- Evaluation Statistic
- Overtime Statistics

Data Analysis

- Queuing Traffic Analysis
- Evaluation Satisfaction
- Average Processing Time Analysis
- Average Waiting Time Analysis
- Timeout Traffic

Detail Query Data

- Detail Queue
- Detail Evaluation



2. Design & Layout:

